



CHANTAL . ARMCHAIR

The divas of the Yé-yé music movement are the muses for the Chantal. This youthful, seductive and naïf piece has bold retro lines, a generous soft back, upholstered armrests and sleek legs with brass covers. An ideal presence filled with charm and charisma.

AS PICTURED

Upholstery: Cotton Velvet, ref. CV19, Green Duck Egg.

Legs: Cotton Velvet, ref. CV19, Green Duck Egg.

Feet covers: Polished Brass.

PRODUCT OPTIONS

Upholstery: Available in all Munna fabrics except Wild Silk; or in client's own material.

Legs: Available upholstered; or Rosewood, Ebony or Walnut wood veneer, or Wengué stain with matt or gloss finishing; or lacquered in all RAL colours with matt or gloss finishing. Gold, Silver or Copper Leaf available on request.

Feet covers: Brass, Nickel or Copper plate in polished or brushed finishing.

STRUCTURE FEATURES

Frame in solid wood.

Upholstery with zig zag springs.

Foam in 100% PU with BS standard fire specifications.

Foam in American Standard CAL 117 for the USA.

Fire retardant interlining is available on request.

Handmade in Porto.

CLIENT'S OWN MATERIAL (COM) REQUIREMENTS

FABRIC:

7 m | 275,6"

Based on plain fabric, standard width 1,40 m | 55"

LEATHER:

130 square feet

DIMENSIONS

W: 80 cm | 31,5"

D: 88 cm | 34,7"

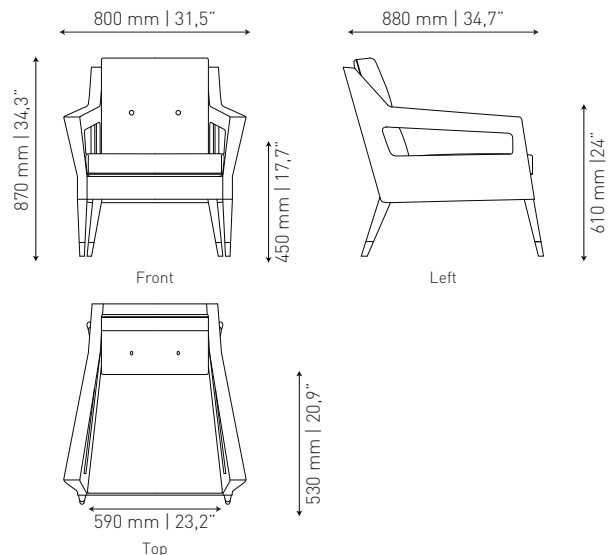
H: 87 cm | 34,3"

SH: 45 cm | 17,7"

SD: 53 cm | 20,9"

AH: 61 cm | 24"

Suitable for customization.



WEIGHT

19 kg | 41,9 lbs

VOLUME

0,58 m³ | 20,5 ft³

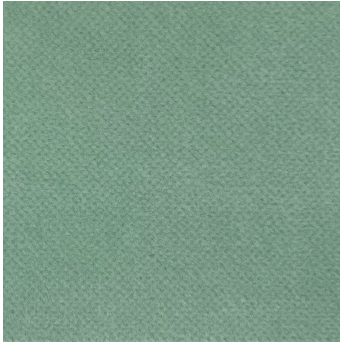
Packed (in reinforced carton case)

30 kg | 66,1 lbs

0,74 m³ | 26,1 ft³

FABRICS

Cotton Velvet
100% Cotton . Martindale 40.000



CV19 Green Duck Egg



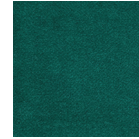
CV02 Pale Pink



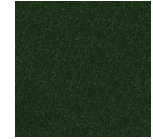
CV04 Camel



CV07 Blue Grey



CV08 Teal



CV09 Emerald



CV12 Red Casino



CV15 Lilac



CV32 Amethyst



CV38 Buttermilk



CV40 Saffron

more colours available

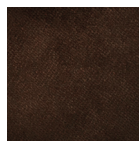
Trevira Velvet
100% Trevira CS . Martindale 50.000



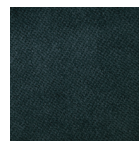
TRV02 Desert



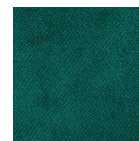
TRV01 Magnolia



TRV03 Chocolate



TRV05 Steel Blue



TRV08 Teal



TRV10 Moss



TRV11 Emerald



TRV12 Lime



TRV15 Dark Red



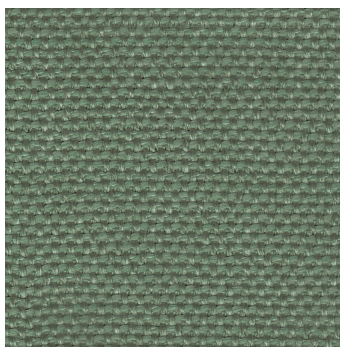
TRV16 Mulberry



TRV20 Antracite

more colours available

Twill FR
53,7% AC + 46,3% PL . Martindale 25.000



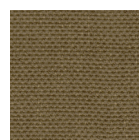
TFR07 Sky



TFR01 Magnolia



TFR02 Desert



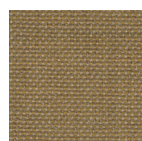
TFR03 Taupe



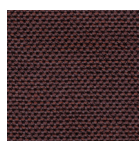
TFR05 Black



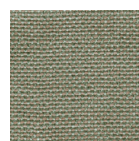
TFR06 Teal



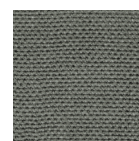
TFR09 Lime



TFR11 Raspberry



TFR13 Lilac Green



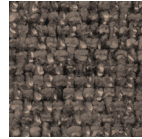
TFR14 Silver

FABRICS

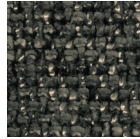
Bond Chenille
100% Poliester . Martindale 100.000



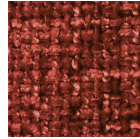
BC01 Warm Grey



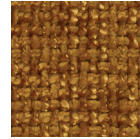
BC02 Antracite



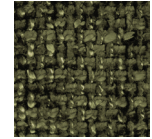
BC03 Blue Grey



BC04 Chilli Pepper



BC05 Mustard



BC06 Emerald

Vivid Chenille
54% PL + 42% AC + 4% VI . Martindale 60.000



VIC09 Saffron



VIC01 Pure White



VIC02 Warm Grey



VIC03 Taupe



VIC04 Light Grey



VIC06 Amethyst



VIC08
Tangerine Tango



VIC10 Emerald



VIC11 Cloud



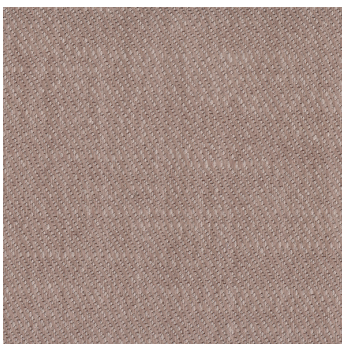
VIC12 Navy



VIC13 Moss

more colours available

Cotton Satin
68% PL + 32% CO . Martindale 40.000



CTS19 Milkshake Pink



CTS10 Desert



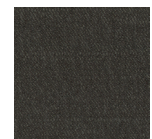
CTS11 Warm Grey



CTS12 Silver



CTS13 Basalt



CTS14 Antracite



CTS15 Lavender



CTS16 Acquamarine



CTS17 Mustard



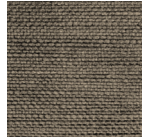
CTS18 Emerald

FABRICS

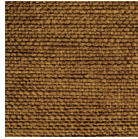
Cotton Linen
52% VI + 42% CO + 6% LI . Martindale 45.000



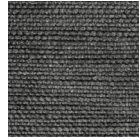
CTL01 Sugar



CTL02 Warm Grey



CTL03 Camel

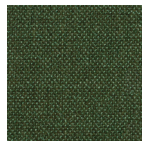


CTL04 Blue Grey

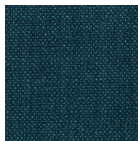
Recycled Polyester
100% RPL . Martindale +100.000



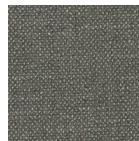
RPL01 Pure White



RPL02 Emerald



RPL03 Steel Blue

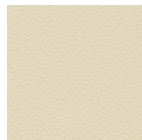


RPL04 Deep Grey

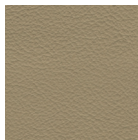
Leather
100% Leather . Dry/wet friction 50.000 cycles



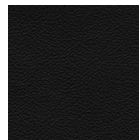
L17 Light Grey



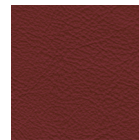
L01 Milk



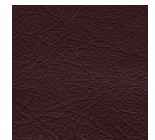
L03 Stone



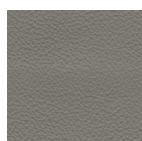
L06 Black



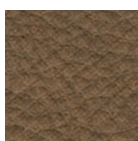
L08 Dark Ruby



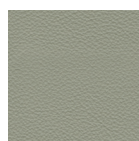
L09 Burgundy



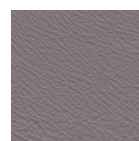
L10 Asphalt



L11 Hazelnut



L15 Pale Green



L16 Lavender

FABRICS

Classic Leather
100% Leather . Dry/wet friction 50.000 cycles



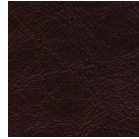
CL03 Sand



CL02 Cream



CL05 Dark Ruby

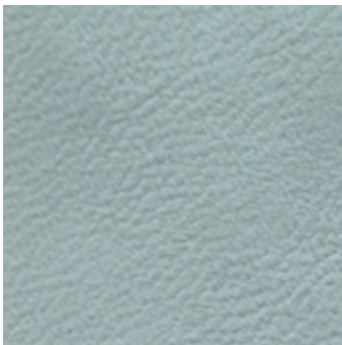


CL06 Burgundy



CL07 Black

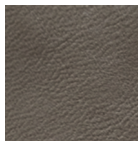
Nubuck
100% Leather . Dry/wet friction 100/25 cycles



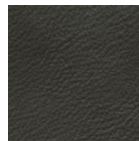
NB05 Sky



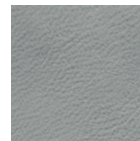
NB01 Desert



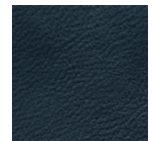
NB02 Taupe



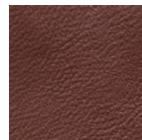
NB03 Antracite



NB04 Light Grey



NB06 Steel Blue



NB07 Burgundy



NB08 Stone

Bouclé
100% Polyethylene . Martindale 80.000



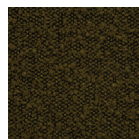
B02 Sugar



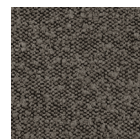
B01 Snow



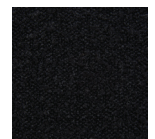
B03 Desert



B04 Emerald



B05 Antracite



B06 Black

FABRICS

Fantasy Fur
82% AC + 18% PL . Martindale N/A



FF01 Cream

WOOD VENEER



American Walnut
Matt or Gloss

Rosewood
Matt or Gloss

Ebony
Matt or Gloss

Wengué Stain
Matt or Gloss

LACQUER



All colours - RAL | NCS
Matt or Gloss

METAL PLATES



Brass
Polished

Brass
Brushed

Nickel
Polished

Nickel
Brushed

Copper
Polished

Copper
Brushed

SPECIAL FINISHINGS (available on request)



Gold Leaf
Matt or Gloss

Silver Leaf
Matt or Gloss

Copper Leaf
Matt or Gloss